



ANNAPOLIS YACHT CLUB

73rd Fall Series

5-6, 12, 19-20, October 2013

The Annapolis Yacht Club is the Organizing Authority

SAILING INSTRUCTIONS

1 RULES

- 1.1 The regatta will be governed by the rules as defined in *The Racing Rules of Sailing* (RRS).
- 1.2 RRS 63.7, Conflict between Rules, is replaced by: "If there is a conflict between a rule in the notice of race and one in the sailing instructions, the sailing instructions shall take precedence."

2 NOTICES TO COMPETITORS - Notices to competitors will be posted on the official notice board located on the 1st deck of the AYC clubhouse outside of the Skipjack Lounge.

3 CHANGES TO SAILING INSTRUCTIONS – Any change to the sailing instructions will be posted before 0830 on the day it will take effect, except that any change to the schedule of races will be posted by 2000 on the day before it will take effect.

4 SIGNALS MADE ASHORE

- 4.1 Signals made ashore will be displayed on the flagpole on the 2nd deck of the AYC clubhouse.
- 4.2 When flag AP is displayed ashore, "1 minute" is replaced with "not less than 90 minutes" in RRS Race Signal AP. The warning signal may be made earlier if all boats eligible to race have checked in.

5 SCHEDULE OF RACES

Fleet 1: J/105, J/80, J/30, J/24, PHRF A2, PHRF B, PHRF C.

Fleet 2: J/35, PHRF A1, PHRF A0.

Fleet 3: PHRF N, CBYRA Multihull A and B

DATE	FLEET	RENDEZVOUS	WARNING
5-6 October	1	1000	1100
12 October	1, 2, 3	0900	1000
19-20 October	2	1000	1100

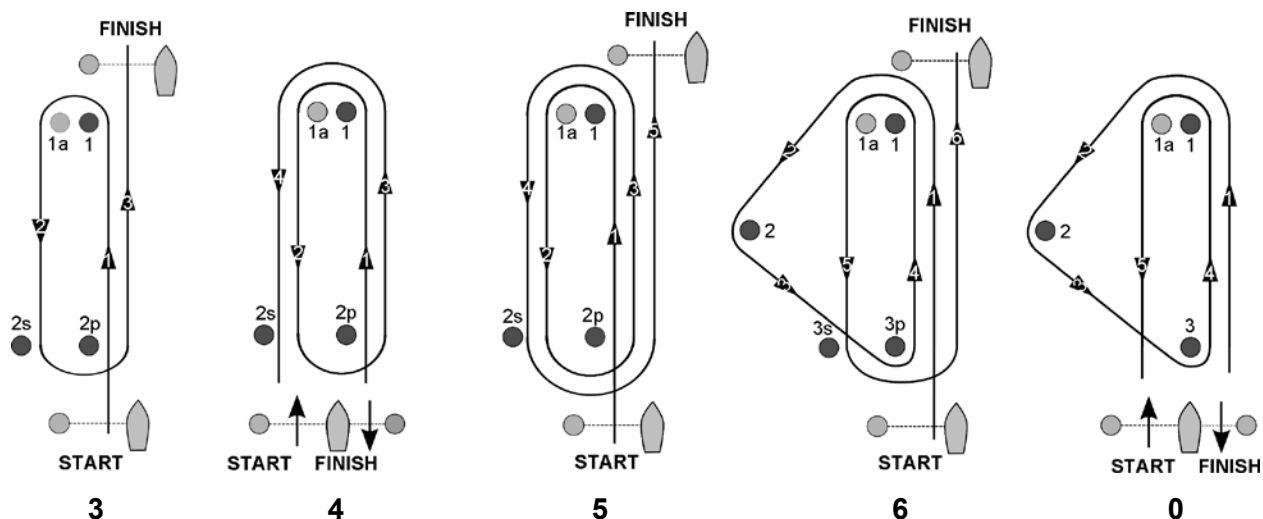
5.1 Rendezvous at Severn River R "2". A race committee boat will display flag "L", accompanied by a sound signal, then proceed to the starting area.

5.2 No warning signal will be made after 1530 hrs.

6 RACING AREA – Attachment 1 shows the location of the racing area.

7 COURSES

- 7.1 The courses for the distance race are described in Attachment 2. No later than the warning signal, the course to be sailed will be shown with numbers on a board displayed on the starting line race committee boat.
- 7.2 The drop mark courses will be as shown in the diagrams and description below.



Course 3: Start, 1, 1a, 2s/2p, Finish Upwind
Course 4: Start, 1, 1a, 2s/2p, 1, 1a, Finish Downwind
Course 5: Start, 1, 1a, 2s/2p, 1, 1a, 2s/2p, Finish Upwind
Course 6: Start, 1, 2, 3p, 1, 1a, 3s/3p, Finish Upwind
Course 0: Start, 1, 2, 3, 1, 1a, Finish Downwind

- 7.3 No later than the warning signal the course to be sailed, the approximate distance between the leeward and windward mark and the approximate magnetic bearing of the weather mark will be shown with numbers on a board displayed on the starting line race committee boat.
- 7.4 For all courses, an offset mark will be set 7 – 10 boat lengths to port of the weather mark. If the offset mark is not in place, the windward mark only shall be rounded to port.
- 7.5 For courses with a leeward gate, if only one of the gate marks is in place it shall be rounded to port.
- 7.6 If “NO GATE” is displayed with the course number the gate marks will be replaced with a single mark to be left to port.
- 7.7 When the first mark of the course is to be a change mark, code flag C will be displayed by the starting line signal boat before the warning signal, accompanied by a series of repetitive sound signals.

8 MARKS

- 8.1 Starting, finishing and offset marks will be lime green cylinders. For the drop mark courses all other original marks will be orange cylinders. For the distance race the marks are defined in Attachment 2.
- 8.2 New marks when used in accordance with RRS 33 will be orange cylinders with a dark colored band. When a new mark is replaced in a subsequent change, it will be replaced by an original mark.
- 8.3 A race committee starting or finishing boat may set a stand-off buoy. When present, this stand-off buoy, the line attaching it to the race committee boat, and the race committee boat are all part of the starting or finishing mark.

9 THE START

- 9.1 The class flags will be the current CBYRA class identification flags.
- 9.2 The order of starts for the first race on Saturday and Sunday 5, 6 October will be: PHRF A2, J/105, J/80, PHRF B, J/30, J/24, PHRF C.
- 9.3 The order of starts for the distance race on Saturday 12 October will be: PHRF A0, PHRF A1, J/35, PHRF A2, J/105, J/80, PHRF B, J/30, PHRF N, J/24, PHRF C, Multihull A & B.
- 9.4 The order of starts for the first race on Saturday and Sunday 19, 20 October will be: PHRF A0, PHRF A1, J/35.
- 9.5 The starting line will be between the staff of an orange flag on the committee boat and the course side of the port-end starting mark.
- 9.6 The starting area is defined as extending 100 yards beyond each end of the starting line and 150 yards behind the starting line and its extensions. Boats shall keep clear of the starting area and the first leg of the course until its class flag has been hoisted by the committee.
- 9.7 The race committee will attempt to notify boats identified as on the course side by announcing their racing numbers on VHF 72. Failure to transmit or receive such notification will not be grounds for redress. This changes RRS 62.

10 CHANGE OF THE NEXT LEG OF THE COURSE - RRS 33 (Changing the Next Leg of the Course) is changed by adding: "When flag Q is displayed with flag C, the change will apply only to the last leg of the course. When a course change applies only for the last leg of the course, the windward mark (for courses finishing to windward) or the leeward mark (for courses finishing to leeward), may not be set.

11 THE FINISH

- 11.1 The finishing line will be between the staff of a blue flag on the committee boat and the course side of the nearby mark designated by the posted course.
- 11.2 Flag R (yellow cross on a red field) displayed at the finish means another race is to follow. Flag A displayed at the finish means no more racing today.

12 TIME LIMIT

- 12.1 There will be no time limit for the distance race on 12 October.
- 12.2 For the drop mark races on 5-6 October and on 19-20 October a race in any class in which no boat in that class has finished within 2 1/2 hours, will be abandoned.

13 PENALTY SYSTEM - The Turns Penalties of RRS 44.1 shall apply. RRS 44.1 is changed by adding: "A boat breaking a rule of RRS Part 2 or RRS 31 may take a penalty after the incident and before the beginning of a protest hearing by taking a 30% Scoring Penalty as calculated in RRS 44.3(c). However, if she caused injury or serious damage or gained a significant advantage in the race or series by her breach, her penalty shall be to retire.

14 PROTESTS AND REQUESTS FOR REDRESS

- 14.1 RRS 61.1(a) is changed by adding: "A boat displaying a red flag and intending to protest is requested to inform the race committee as soon as possible after finishing by hail until acknowledged. The hail should include the sail number of the protested boat. Hails on VHF channel 72 are acceptable"
- 14.2 Protests shall be submitted to the front desk at the AYC clubhouse. Email is not acceptable. Standard protest forms are available at the yacht club front desk.
- 14.3 The protest time limit is three hours of the protesting boat's finish in the last race of the day. In the event of abandonment the protest time limit will be two hours after the signal boat docks.
- 14.4 Protests will be heard at the AYC clubhouse starting at 2000 on the Friday following the race.

15 RADIO COMMUNICATIONS

- 15.1 A boat may not make any radio transmissions while racing except on VHF channel 13, 16 or with the race committee on VHF channel 72. While racing, a boat shall not receive ANY communication not available to all boats with the exception of those permitted by RRS 41(d). This restriction includes mobile telephones and internet.
- 15.2 The race committee may attempt to provide information on VHF channel 72 as a courtesy. In all cases race signals shall govern.

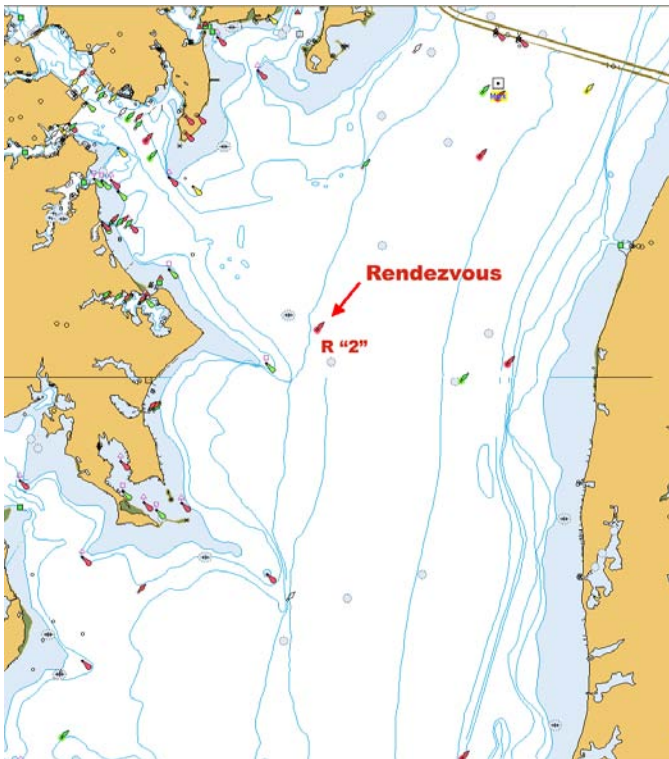
16 SCORING - The Low Point System in RRS Appendix A will apply, except each boat's series score shall be the total of all her race scores. The distance race will be weighted at 1.5 times the drop mark races.

17 SAFETY REGULATIONS

- 17.1 A boat that retires from a race, or leaves the racing area between races, shall notify the race committee as soon as possible.
- 17.2 RRS 40.1 is replaced by: "It shall be the individual responsibility of each competitor to wear adequate personal buoyancy when conditions warrant.
- 17.3 Boats shall not exercise right of way, cross in close proximity to, or interfere with the reasonable transit of the race area by a freighter, tug or other commercial vessel. Competitors must take corrective action well in advance of any potentially dangerous situation. A boat protested under this rule has the burden of proof that she complied with this rule. RRS 60.3 is changed to add "If the race committee receives a report of an incident where a boat(s) may have interfered with commercial traffic it may protest any boat involved."

18 PRIZES - Prizes will be awarded based on the number of entries in each class: three boats, first place only; five boats, first and second place; seven or more boats, first, second and third place. Trophies will be presented at the annual prize giving party on 23 November 2013.

There will be a party for competitors Saturdays 5, 12 and 19 October at the AYC clubhouse starting at 1730



ATTACHMENT 1 - RACING AREA

Tolly Point, "1AH", Bloody Point and Thomas Pt Lt shall be passed on the channel side at all times.

Marks are shown in their anticipated 2013 configuration. This chart is not for navigation.

ATTACHMENT 2 – DISTANCE RACE COURSES

The number designating the course to be sailed will be posted on a board on the starting line race committee boat. The mark positions given below are approximate and are for identification, not navigation. Tolly Point, “1AH”, Bloody Point and Thomas Pt Lt shall be passed on the channel side at all times.

COURSE	MARK	LEAVE TO	~ LAT	~ LON
#1	Start		38 57.16	076 24.32
~8 nm	SR	Port	38 53.67	076 25.87
	WR 87	Port	38 55.97	076 23.55
	R2	Finish	38 56.50	076 25.48

#2	Start		38 57.16	076 24.32
~12 nm	SR	Port	38 53.67	076 25.87
	86	Port	38 52.00	076 23.54
	WR 87	Port	38 55.97	076 23.55
	R 2		38 56.50	076 25.48

#3	Start		38 57.16	076 24.32
~17 nm	85A	Port	38 49.95	076 27.72
	86	Port	38 52.00	076 23.54
	WR 87	Port	38 55.97	076 23.55
	R2	Finish	38 56.50	076 25.48

#4	Start		38 57.16	076 24.32
~22 nm	84A	Starboard	38 47.59	076 24.69
	1	Starboard	38 51.85	076 26.99
	86	Port	38 52.00	076 23.54
	WR 87	Port	38 55.97	076 23.55
	R2	Finish	38 56.50	076 25.48

#5	Start		38 57.16	076 24.32
~27 nm	83	Starboard	38 45.13	076 26.65
	1	Starboard	38 51.85	076 26.99
	86	Port	38 52.00	076 23.54
	WR 87	Port	38 55.97	076 23.55
	R2	Finish	38 56.50	076 25.48

