

ATTACHMENT #1

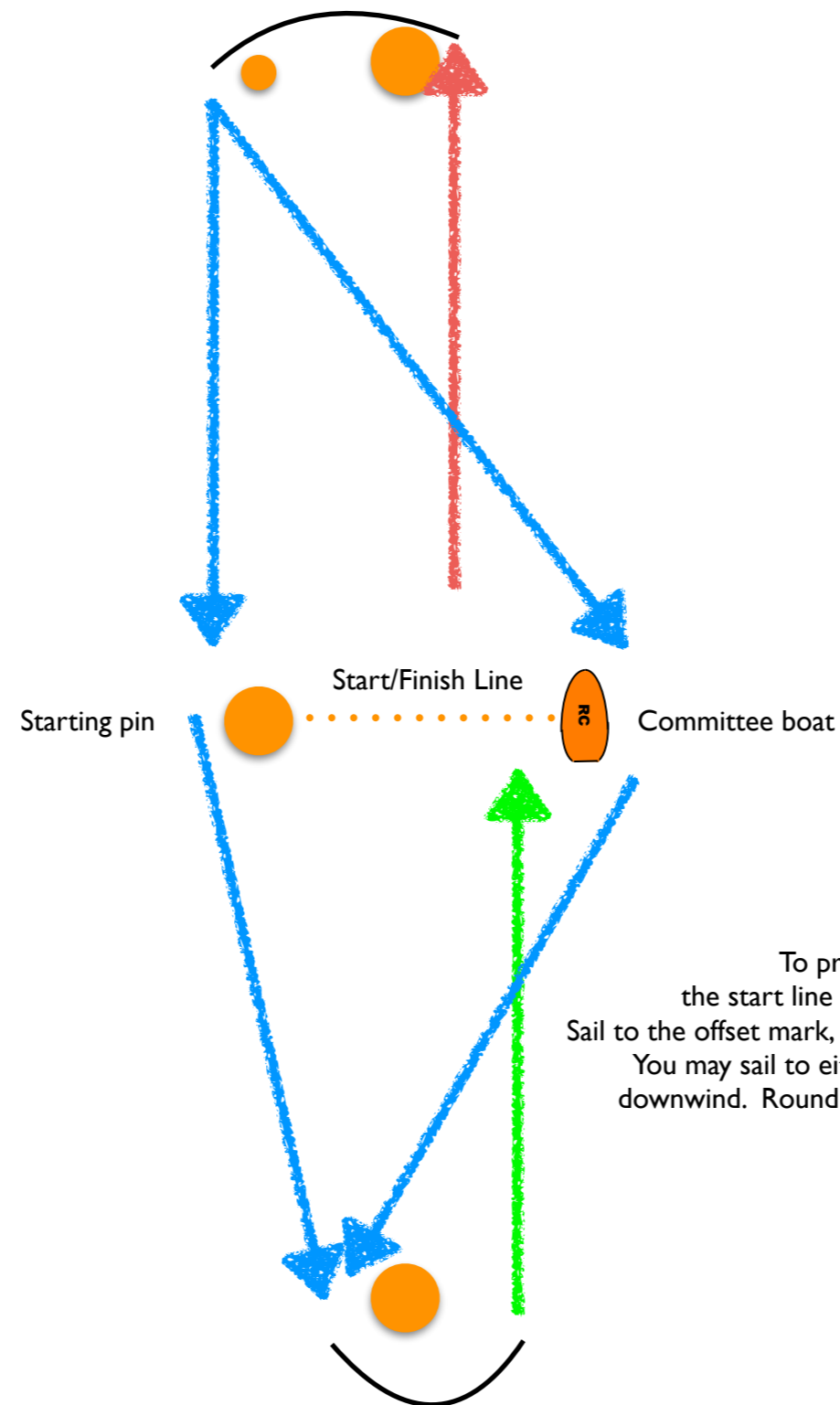
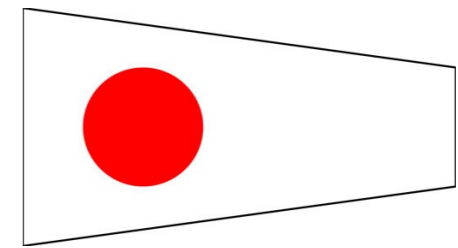
(amended May 2, 2016)

Thursday Night Racing Course Diagrams & Class Flags

General Administration

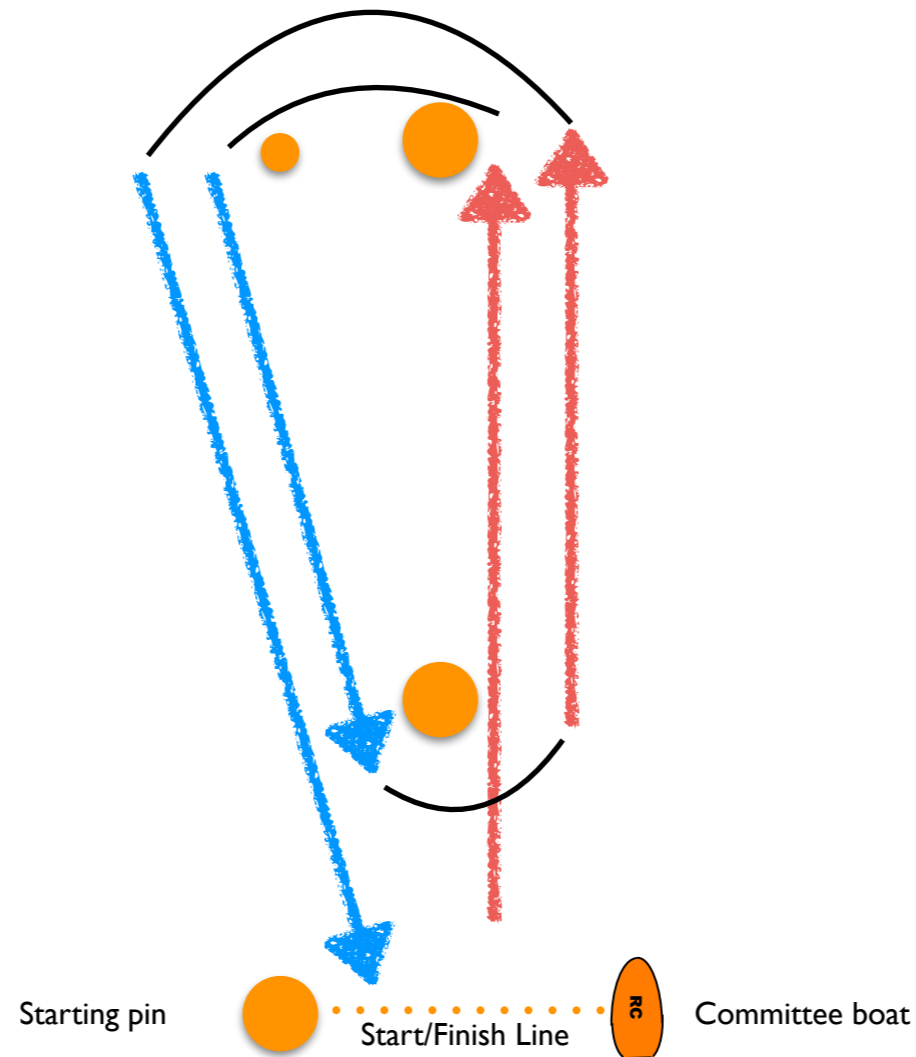
- The division assignments class flags and VHF courtesy broadcast frequency descriptions are included in this attachment.
- The expected order for starts on the Alpha division course is J/70's first and J/80's second. The expected order for starts on the Bravo division course will be J/22's first and J/24's second, followed by the Lightnings. The race committee may change the order.
- The approximate location of both the Alpha and Bravo divisions race courses is attached.
- All sailboats intending to race must check in with the race committee prior to racing by sailing astern of their division's committee boat on starboard tack. Each boat should hail her boat name and sail number and shall be acknowledged by the race committee before racing.
- The race committee will fly code flag R if another race will be started.

Course One Diagram



To properly sail COURSE ONE, after the start sail from the start line to the windward mark, leaving the windward mark to port. Sail to the offset mark, leaving the offset mark to port. Sail downwind to the leeward mark. You may sail to either side of the start/finish line, but not through it on your way downwind. Round the leeward mark leaving it to port. Sail to windward and cross the finish line.

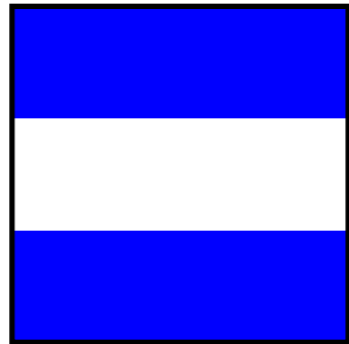
Course Two Diagram



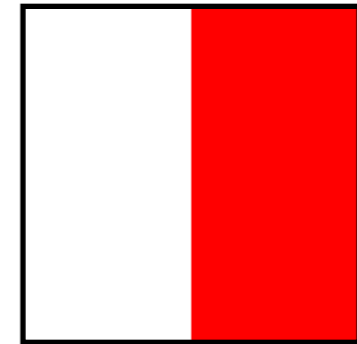
To properly sail COURSE two, after the start sail from the start line to the windward mark, leaving the windward mark to port. Sail to the offset mark, leaving the offset mark to port. Sail downwind to the leeward mark. Round the leeward mark leaving it to port. Sail to the windward mark, leaving the windward mark to port. Sail to the offset mark, leaving the offset mark to port. Sail downwind to the finish line.

Thursday Night Racing Class Flags

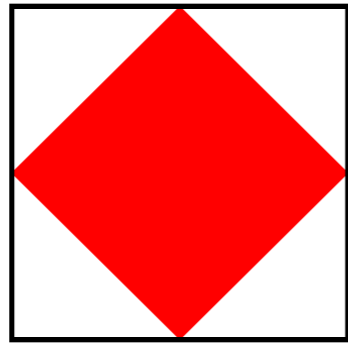
The J/22
Class Flag is
the J Flag



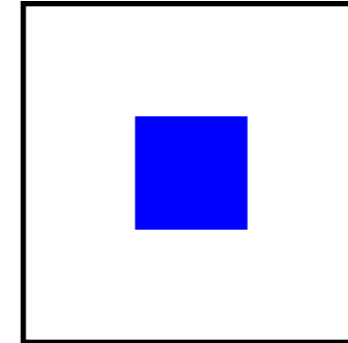
The J/24
Class Flag is
the H Flag

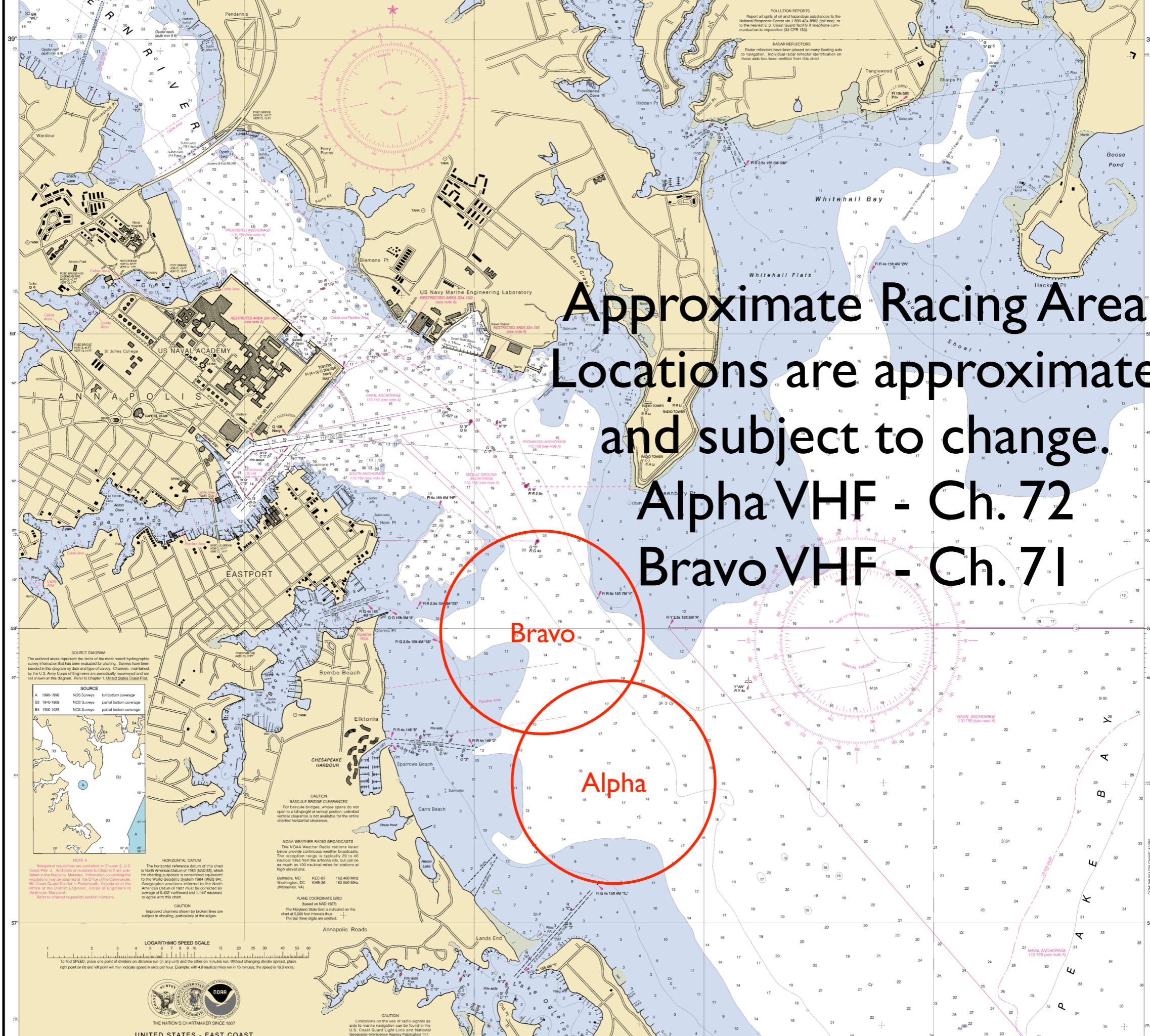


The J/80
Class Flag is
the F Flag



The J/70
Class Flag is
the S Flag





Approximate Racing Area
Locations are approximate
and subject to change.
Alpha VHF - Ch. 72
Bravo VHF - Ch. 71

Bravo

Alpha

SOURCE DIAGRAM
The outlined areas represent the limits of the most recent hydrographic survey information that has been evaluated for charting. Surveys have been conducted in this diagram by date and type of survey. Channels maintained by the U.S. Army Corps of Engineers are periodically resurveyed and are not shown on this diagram. Refer to Chapter 1, United States Coast Pilot.

SOURCE	
A 1990-1996	NOS Surveys full bottom coverage
B3 1940-1969	NOS Surveys partial bottom coverage
B4 1900-1939	NOS Surveys partial bottom coverage

NOTE A
Navigation regulations are published in Chapter 2, U.S. Coast Pilot 3. Additions or revisions to Chapter 2 are published in the Notice to Mariners. Information concerning the regulations may be obtained at the Office of the Commander, 8th Coast Guard District in Portsmouth, Virginia or at the Office of the District Engineer, Corps of Engineers in Baltimore, Maryland.
Refer to colored regulation section numbers.

HORIZONTAL DATUM
The horizontal reference datum of this chart is North American Datum of 1983 (NAD 83), which for charting purposes is considered equivalent to the World Geodetic System 1984 (WGS 84). Geographic positions referred to the North American Datum of 1967 must be corrected an average of 0.402' northward and 1.144' eastward to agree with this chart.

CAUTION
Improved channels shown by broken lines are subject to shoaling, particularly at the edges.

LOGARITHMIC SPEED SCALE
To find SPEED, place one point of dividers on distance run in any units and the other on minutes run. Without changing divider spread, place right point on 60 and left point will indicate speed in units per hour. Example: with 4.0 nautical miles run in 15 minutes, the speed is 16.0 knots.

UNITED STATES - EAST COAST



CONTINUED ON CHART 12382